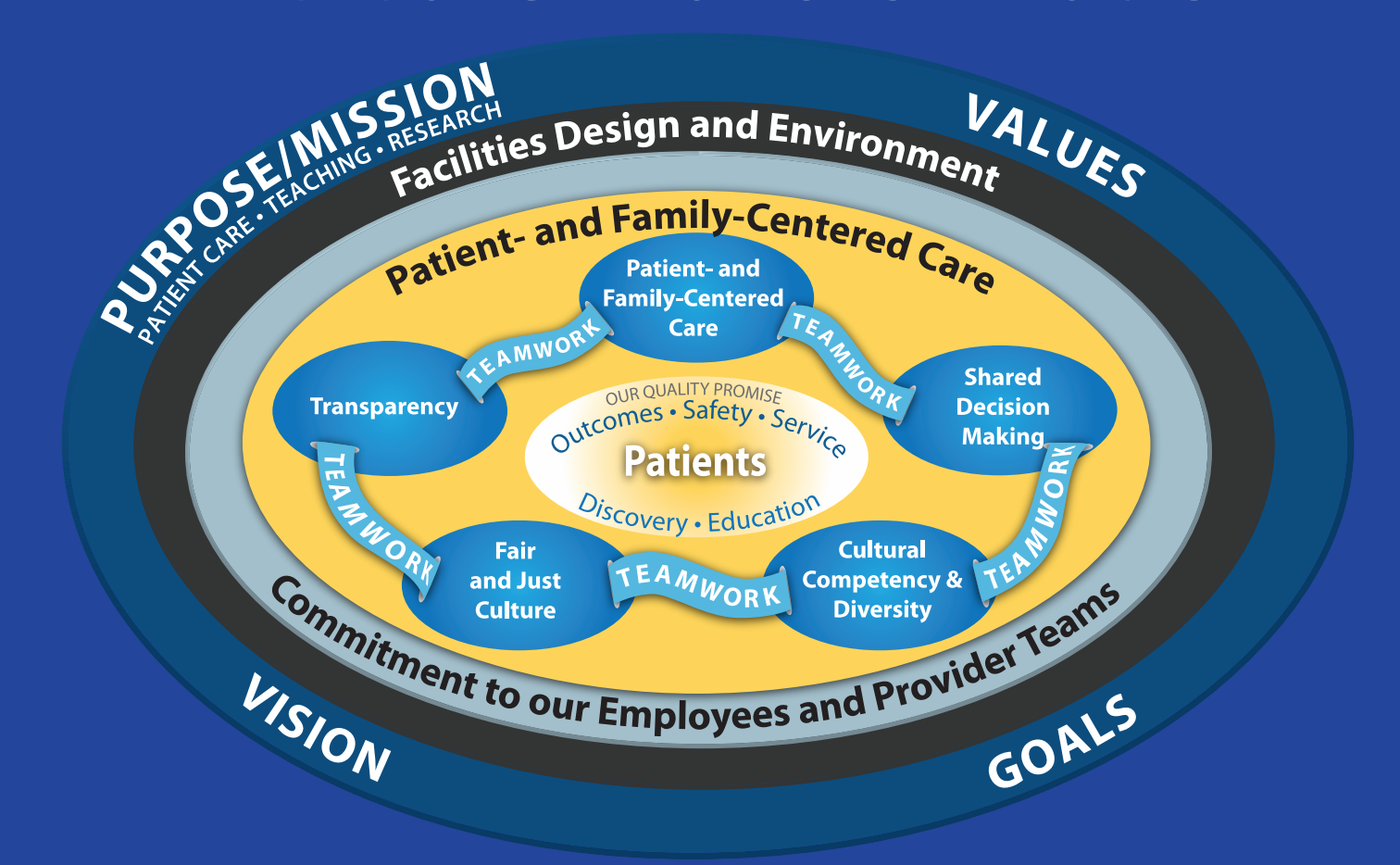




# Accountable Care Unit™

Bryan W Castle, BSN, RN, MBA  
Susan E. Shapiro, PhD, RN, FAAN



## Our Accountable Care Unit™

**What:** ACUs™ are unit based teams of professionals consistently responsible for the clinical, service, and cost outcomes we produce.

**Why:** To bring the entire health care team together at the bedside at the same time everyday to develop a shared mental model of our patients' plans of care.

The ACU™ is a place where patients, families, and hospital professionals support each other and proactively exchange perspectives to keep our patients safe and comfortable.

## Designed for Safety

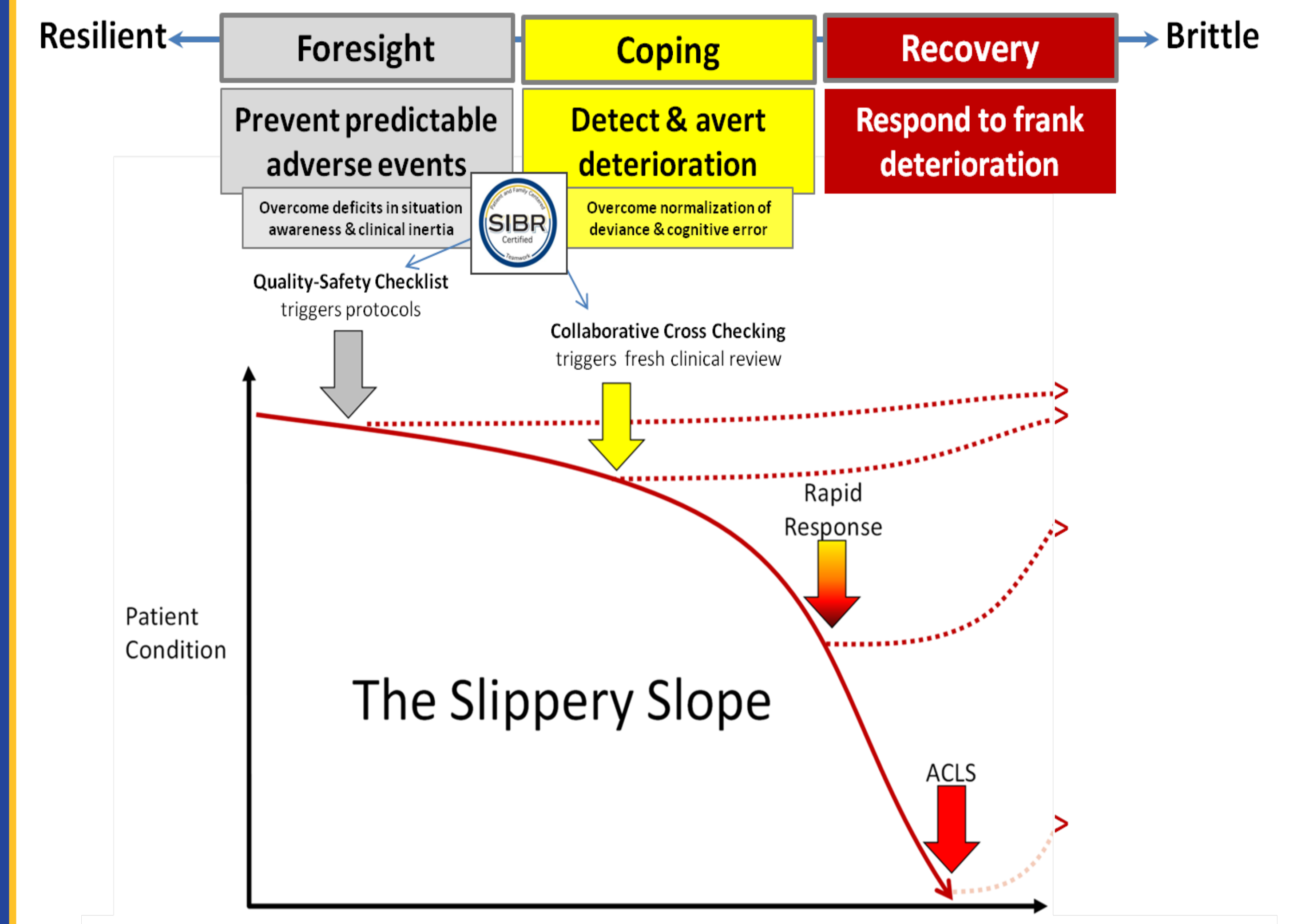
SIBR™ and other structured daily communication helps our ACU™ overcome threats to quality & patient safety.

**Deficits in Situation Awareness** – we integrate information and trends to recognize risk states or patients drifting off-course.

**Diagnostic Error & Normalization of Deviance** – we question original assumptions and unexplained abnormalities.

**Clinical Inertia** - we initiate or intensify therapy when indicated.

## Slippery Slope



Jason Stein, MD SFHM | Emory University School of Medicine (Adapted from Charles Pain, Clinical Excellence Commission, New South Wales, Australia)

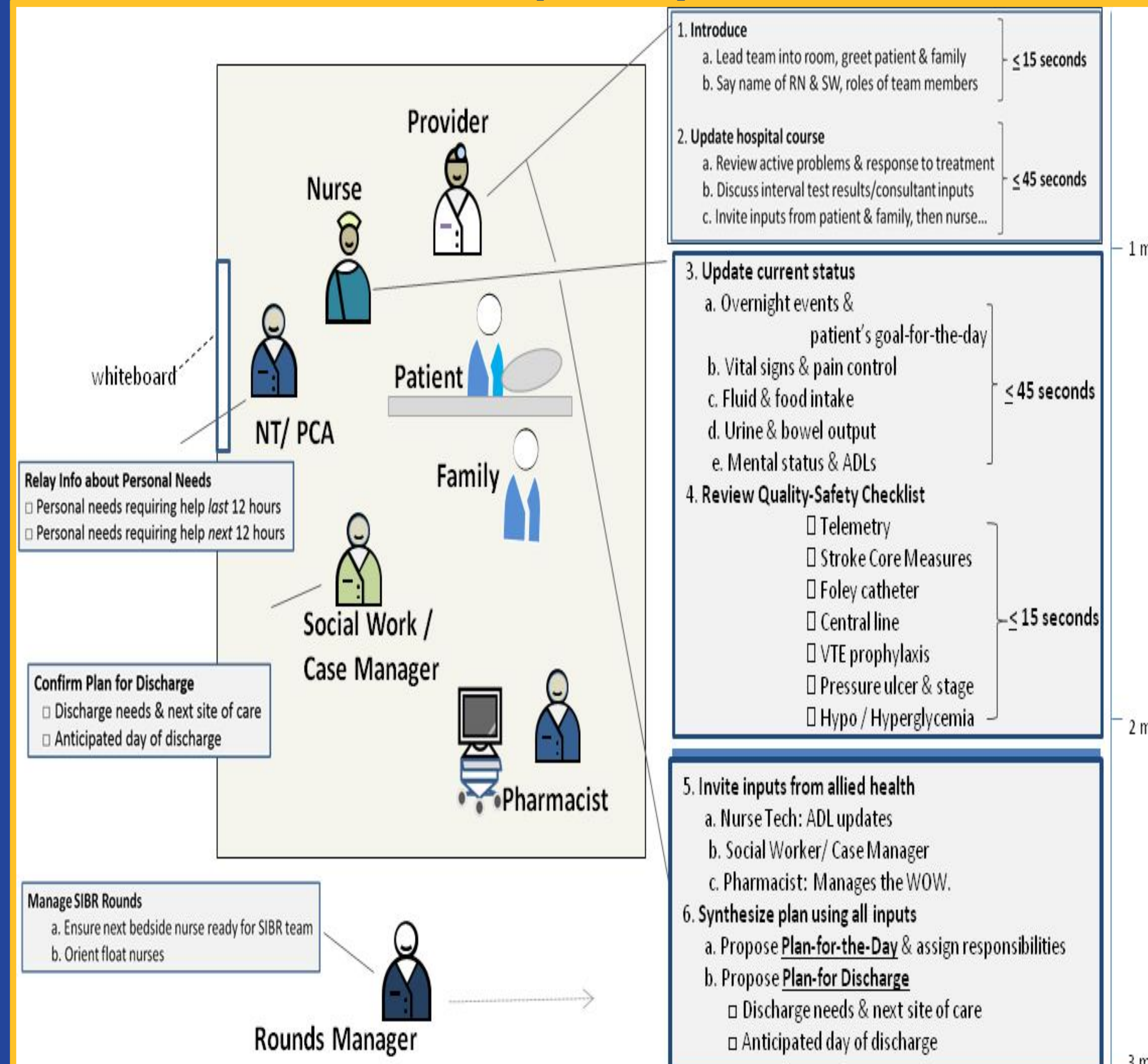
## Designed for Interdisciplinary Teams

**How:** Through transparent sharing of critical information to move patients safely through their hospitalization.

### Pillars of the ACU™:

- Unit-based teams** – our physicians, nurses, and allied health colleagues share dedicated time, space, and focus to care for our patients through trust, collaboration, and mutual accountability.
- Patient-centered teamwork** – Patients are at the center of Structured Interdisciplinary Bedside Rounds (SIBR)™, and other formal handoff procedures.
- Unit-level performance** – we share responsibility for our ACU outcomes.
- Partnered-management** – our nurse and physician leaders work as true partners to achieve the best outcomes possible for our patients, families, and the professionals in our workplace

## Structured Interdisciplinary Bedside Rounds™



## The Attributes of the ACU™

- Shared Mental Model for Teamwork
- Standardized Communication Protocol
- Collaborative Cross Checking
- Quality-Safety Checklist
- Interdisciplinary Plan of Care
- Standardized SIBR™ Training & Certification
- Situational Awareness
- Culture of Safety
- Formation of Professional Relationships

This project is supported by the Health Resources and Services Administration award UD7HP26046. The contents of this poster are solely the responsibility of the authors and do not necessarily represent the official views of the Health Services and Resource Administration.