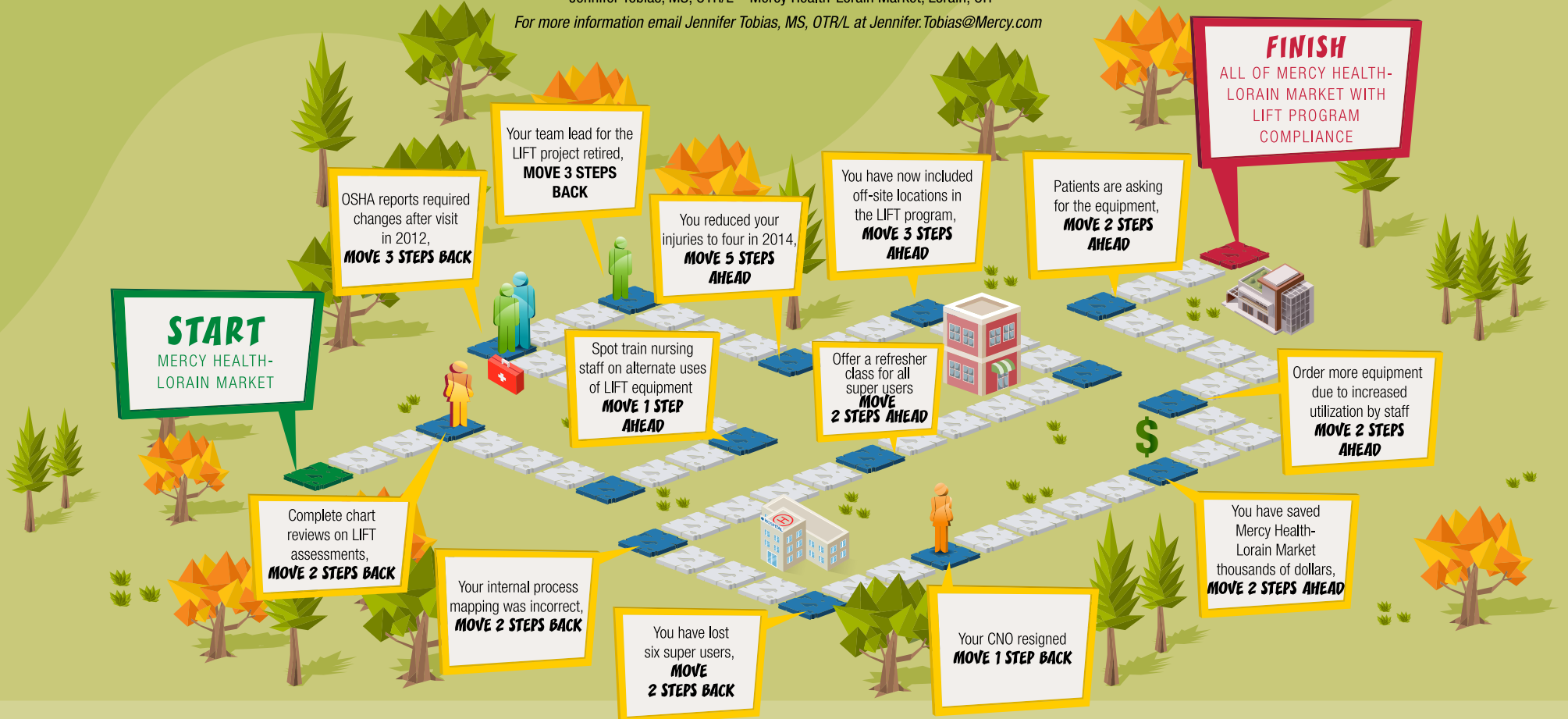


JOURNEY TO SAFE PATIENT HANDLING

THE GAME OF LIFT – LIVING INJURY FREE TOGETHER

Jennifer Tobias, MS, OTR/L • Mercy Health-Lorain Market, Lorain, OH
 For more information email Jennifer Tobias, MS, OTR/L at Jennifer.Tobias@Mercy.com



HOW TO PLAY!

- Attend the LIFT class
- Use the equipment
- Save your backs
- Mobilize your patients
- Improve overall safety and WIN!

DID YOU KNOW?

- For every \$1 spent on patient safety, \$2.12 is saved¹
- Every 4+ injured employees out of 100 are Certified Nursing Assistants²
- The average workman's compensation claim of patient mobility related injury is \$15,600 with a cost of replacement in nursing of \$25,000 and more³
- The National Bureau of Labor reported that nursing assistants have the second highest rate of injury, following only firefighters. However, nursing assistants suffer back injuries more than any other profession⁴
- The Ohio State University's Spine Research Institute (2013) reported "there is NO safe way to lift a patient manually."⁴
- Since the introduction of safe patient mobility equipment, the VA has reported a 40% reduction in injuries⁴
- Patient lifts not only assist in mobility, but minimize risk of pressure ulcers, falls and skin tears²

REFERENCES:

1. Morrison, K. (2014, May 23). The ROI of safety. [Electronic Version]. Safety and Health Magazine. Retrieved September 22, 2015 from <http://www.safetyandhealthmagazine.com>.
2. OSHA. (2015, September). Safe Patient Handling Programs. Retrieved September 22, 2015 from <http://www.osha-slc.gov>.
3. Medicare Products (2015, July 1). Medicare Lift Aid: Preventing Injury to Patients and Caregivers. Retrieved September 22, 2015 from <http://www.medicarelift.com/Map>.
4. NPR. (2015, February 6). Hospitals Fail to Protect Nursing Staff from Becoming Patients. Retrieved September 22, 2015 from <http://www.npr.org/2015/02/06/385540569/injured-nurses-oh>.

MERCY HEALTH-LORAIN MARKET OUTCOMES SINCE 2012

- Reduction of patient mobility injuries from 20 employees in 2012 to 3 in 2015
- Completed training on 2000+ associates
- Projected Workman's Compensation claims without use of equipment estimated at \$650,000.
- Have required all Assistant Managers to function as super users on the medical floors
- Expanded the program in early 2015 to include satellite locations
- Continuous monthly offering of educational classes on the equipment for all staff
- Instituted requirement of LIFT equipment during any patient mobility if patient is at high fall's risk based on the Morse scale
- Mercy Health-Lorain Market is the most successful Mercy facility throughout the system for using the LIFT equipment

EMPLOYEE QUOTES

- "Where was this equipment a few years ago?"
- "I wish I would have had this when I injured my back five years ago."
- "This is a heck of a back saver."
- "I love the equipment! I use this on all of my patients."
- "We use this all the time. It has made a huge difference for us and our patients."

