

How Do I Get All the Data on *ONE* Graph?



Jacqueline Anderson, PhD, RN
Victoria S. Jordan, PhD
January 22, 2010
New Orleans, LA

THE UNIVERSITY OF TEXAS
MD ANDERSON
CANCER CENTER
Making Cancer History®

Texas Medical Center Houston, Texas



THE UNIVERSITY OF TEXAS
MD ANDERSON
CANCER CENTER
Making Cancer History®

The University of Texas M.D. Anderson Cancer Center

- Created by Texas Legislature in 1941
- NCI Comprehensive Cancer Center
- Magnet Hospital
- Core Values - Caring, Integrity and Discovery
- Dedicated to research, education, treatment and prevention
- Treated **89,110** people, including **29,463** new patients in 2008
 - 18 outpatient multidisciplinary and specialty clinics
 - 507 inpatient beds; 22,194 admissions annually
 - 3 Ambulatory Treatment Centers
- Nearly 13,000 patients in active clinical trials
- 17,687 employees
- 1,469 faculty (MDs and PhDs)
- 2,341 nurses
- 1,395 volunteers



Challenges with NDNQI Data

- 19 Inpatient units reporting data
- 5 different benchmark groups
 - Medical
 - Surgical
 - Combined Medical-Surgical
 - Step-down
 - ICU
- Required to present patient falls, pressure ulcer and hours per patient day data
- Brief time on meeting agendas



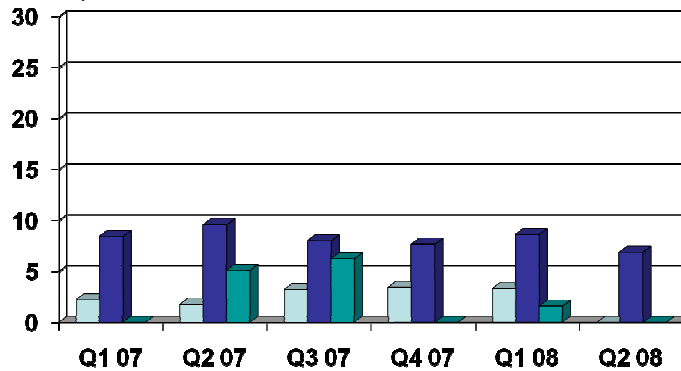
False Starts



THE UNIVERSITY OF TEXAS
MDANDERSON
CANCER CENTER
Making Cancer History®

NDNQI Pressure Ulcer Prevalence

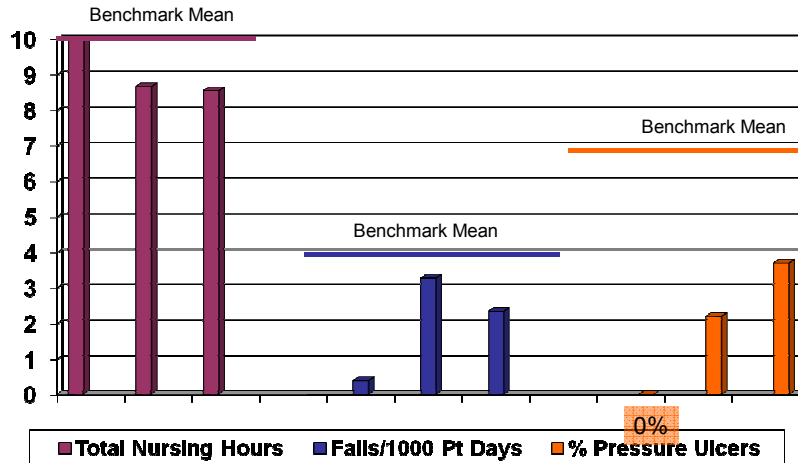
Percent Pts w/ pressure ulcer



This graph will show performance over time for each unit or comparison group – required multiple slides!

THE UNIVERSITY OF TEXAS
MDANDERSON
CANCER CENTER
Making Cancer History®

NDNQI Results



This was an attempt to put each group on one graph!

THE UNIVERSITY OF TEXAS
MD ANDERSON
CANCER CENTER
Making Cancer History

Desired Outcomes

- Need graphs to be clear & concise
- Able to communicate our performance to benchmarks
- Graphs are self-explanatory

THE UNIVERSITY OF TEXAS
MD ANDERSON
CANCER CENTER
Making Cancer History

Percent Variance from the Mean

- Easy to create
- Easy to understand – above or below the line
- All on ONE graph

THE UNIVERSITY OF TEXAS
MD ANDERSON
CANCER CENTER
Making Cancer History®

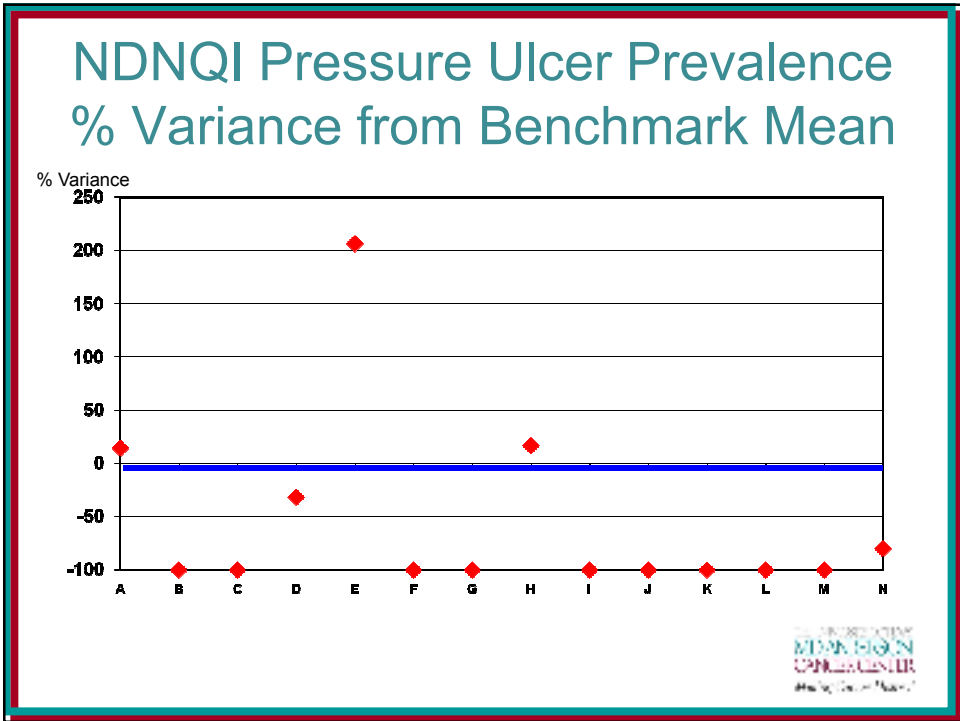
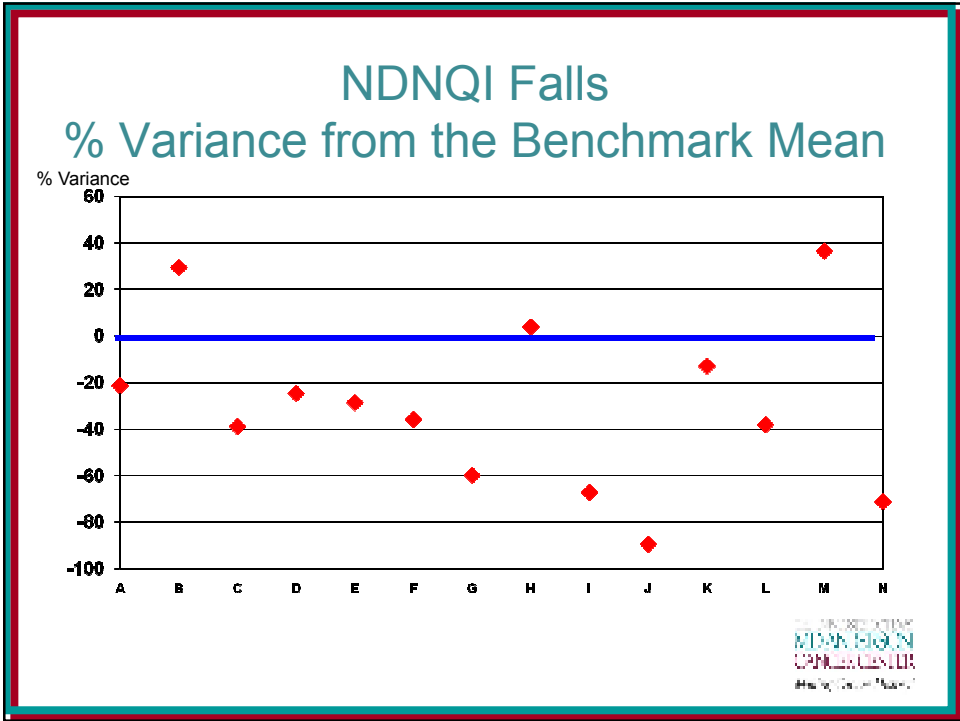
Formula

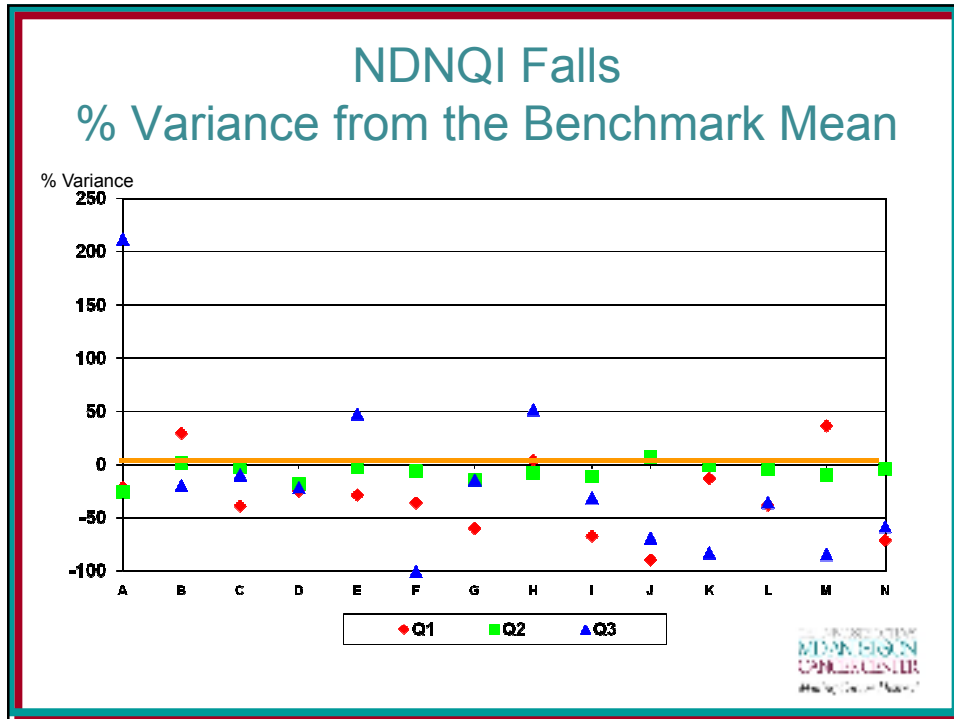
$$\frac{\text{Unit rate} - \text{benchmark mean rate}}{\text{benchmark mean rate}} \times 100$$

$$(2.2 - 3.3)/3.3 \times 100 = -33.3 = -33\%$$

$$(6.5 - 3.3)/3.3 \times 100 = 96.9 = 97\%$$

THE UNIVERSITY OF TEXAS
MD ANDERSON
CANCER CENTER
Making Cancer History®





- ## Results
- Easy to determine above or below the line
 - All units can see how others are doing
 - Directs unit leadership to other units for assistance in improving metrics/identifying best practices
 - Present all data in two slides
 - Works well for interdisciplinary and institutional committees
- THE UNIVERSITY OF
MINNESOTA
 CANCER CENTER
 Making Cancer History™

Thank you



- Questions??
- Contact me at:

janderson@mdanderson.org

THE UNIVERSITY OF TEXAS
MD ANDERSON
CANCER CENTER
Making Cancer history.™