

# Creating a Culture of Zero Tolerance for Central Line-Associated Bacteremia

J Zack, PhD, RN, CIC<sup>1</sup>; D Spence, BSN, RN, CCRN<sup>1</sup>; B Lamb, BSN, RN<sup>1</sup>; R Martin, MD<sup>1</sup>, D Striker, MD, FCCP<sup>1</sup>; J Krettek, MD, PhD<sup>1</sup>; E Dubberke, MD, MSPH<sup>1,2</sup>  
 Missouri Baptist Medical Center<sup>1</sup> Washington University, St. Louis, MO,<sup>2</sup>

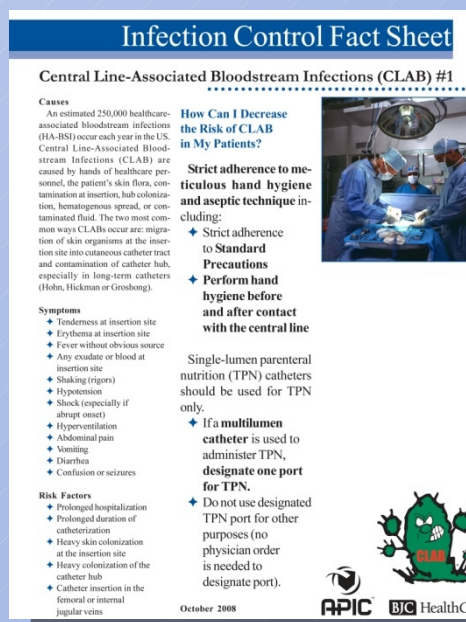
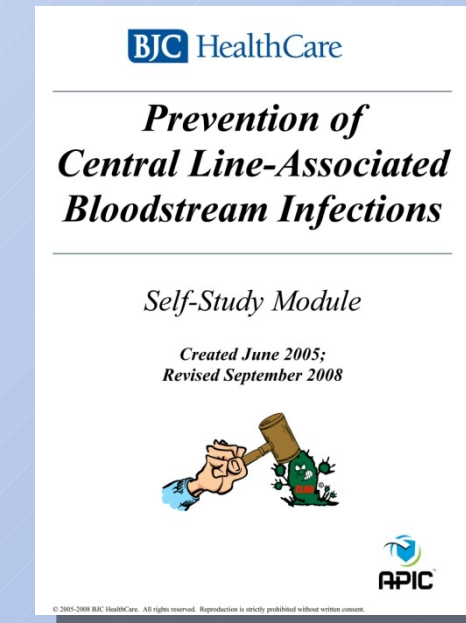
## Background Information

- Annually, the Centers for Disease Control (CDC), estimate 250,000 cases of central line-associated bacteremia (CLAB)
- Attributable mortality is 12%-25%
- Additional patient length of stay in the ICU
- Additional patient length of stay in the hospital 7-10 days
- Associated costs of caring for these patients \$296 million - \$2.3 billion.

## Purpose

- The goal was to create a culture of zero tolerance for CLAB in the Medical/Surgical Intensive Care Unit (MSICU).
- Patients with central lines are more susceptible to getting a CLAB.
- Device utilization is prevalent in this population.
- CLAB rates are state reportable and there is increased public awareness surrounding these rates.

## Strategy and Implementation



- Increase in CLAB rates in the MSICU.
- Identified that the educational module had not been implemented for over a year.
- CLAB educational module was given to all MSICU nurses using an electronic testing system -Cornerstone.

Here's how you can prevent Catheter Line Associated Bacteremia (CLAB) in your patient!

Make sure you thoroughly scrub the injection port with alcohol before injecting IV medications.

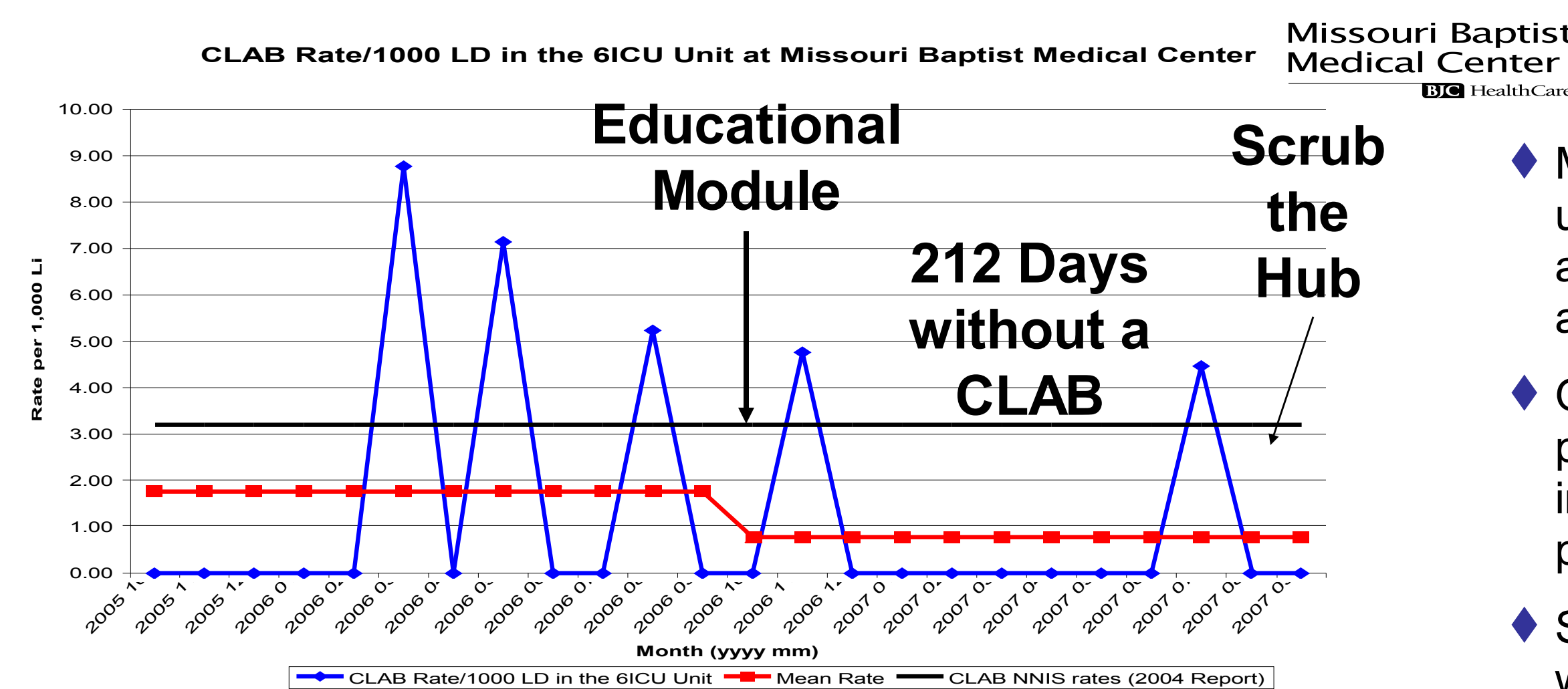


Don't forget to "Scrub the Hub."

### Scrub the Hub Maintenance Bundle

- Perform hand hygiene.
- Put on clean gloves prior to accessing the line.
- Perform a 30 Second "Hub Scrub" using alcohol and friction in a twisting motion on the hub as if you were juicing an orange.
- Draw the blood or inject medications per the policy.
- Discard gloves and perform hand hygiene.

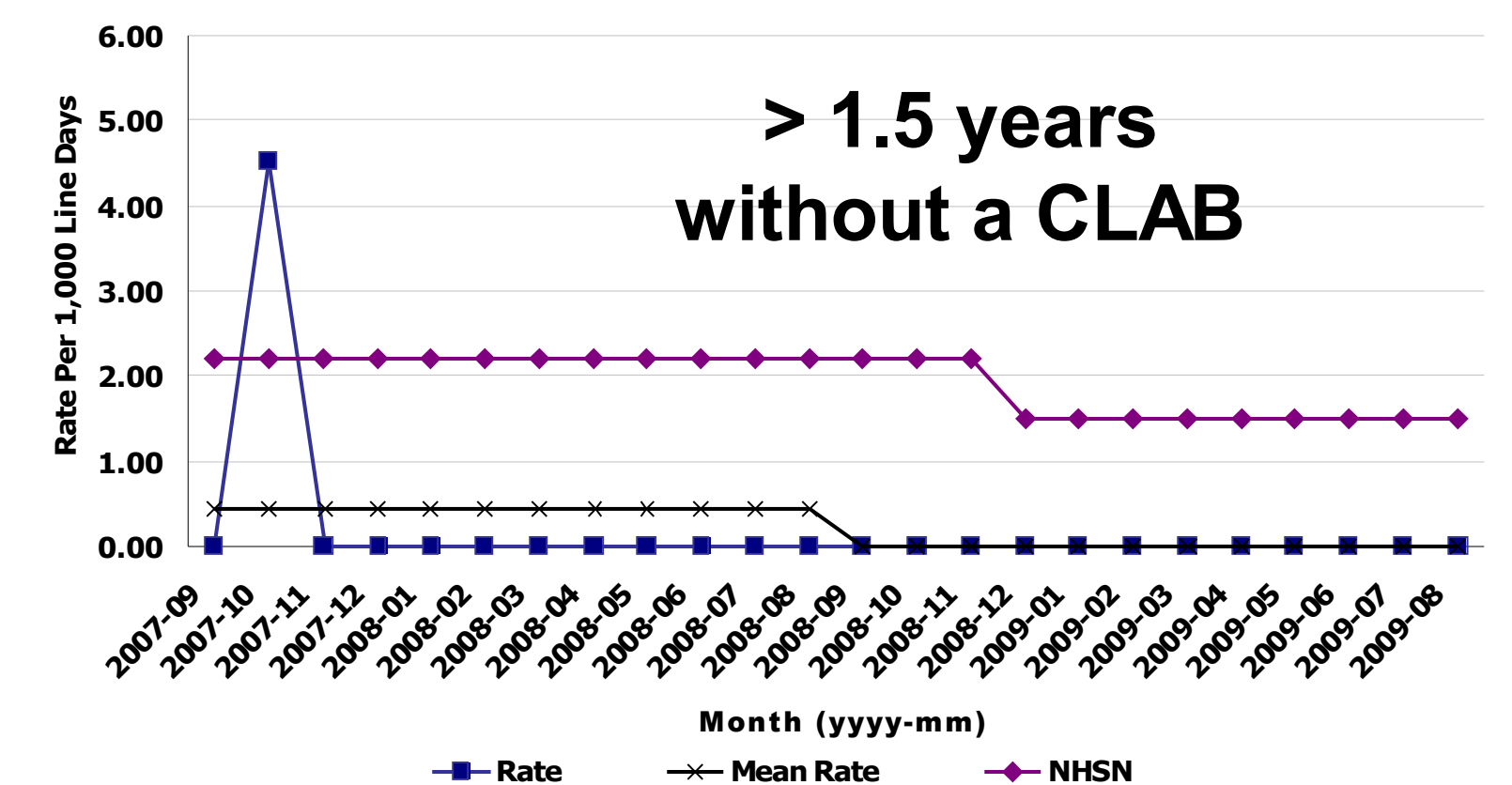
## Intervention Timing



- MSICU nurses were upset about the CLAB after 212 days without a CLAB.
- Observations were performed by the infection prevention practitioner.
- Scrub the hub bundle was initiated

## Results

### Medical Surgical Intensive Care Unit



## Summary/Conclusions

- The CLAB educational module resulted in zero CLAB rates, thus the educational module is annual mandatory testing for MSICU nursing staff.
- CLAB rates are shared at nursing staff meetings.
- Transparency in feeding back the CLAB rates to the MSICU nurses changed the culture in the MSICU.
- One CLAB is considered a bad outcome.

## Implications for Practice

- Creating a culture for zero tolerance for CLAB improves patient care by reducing mortality, the number of days in the ICU and the hospital, and associated costs.
- Additionally this creates a culture of success among the nurses, increasing nursing ownership and nursing morale.



Missouri Baptist MEDICAL CENTER

BJC HealthCare

Washington University in St. Louis SCHOOL OF MEDICINE