

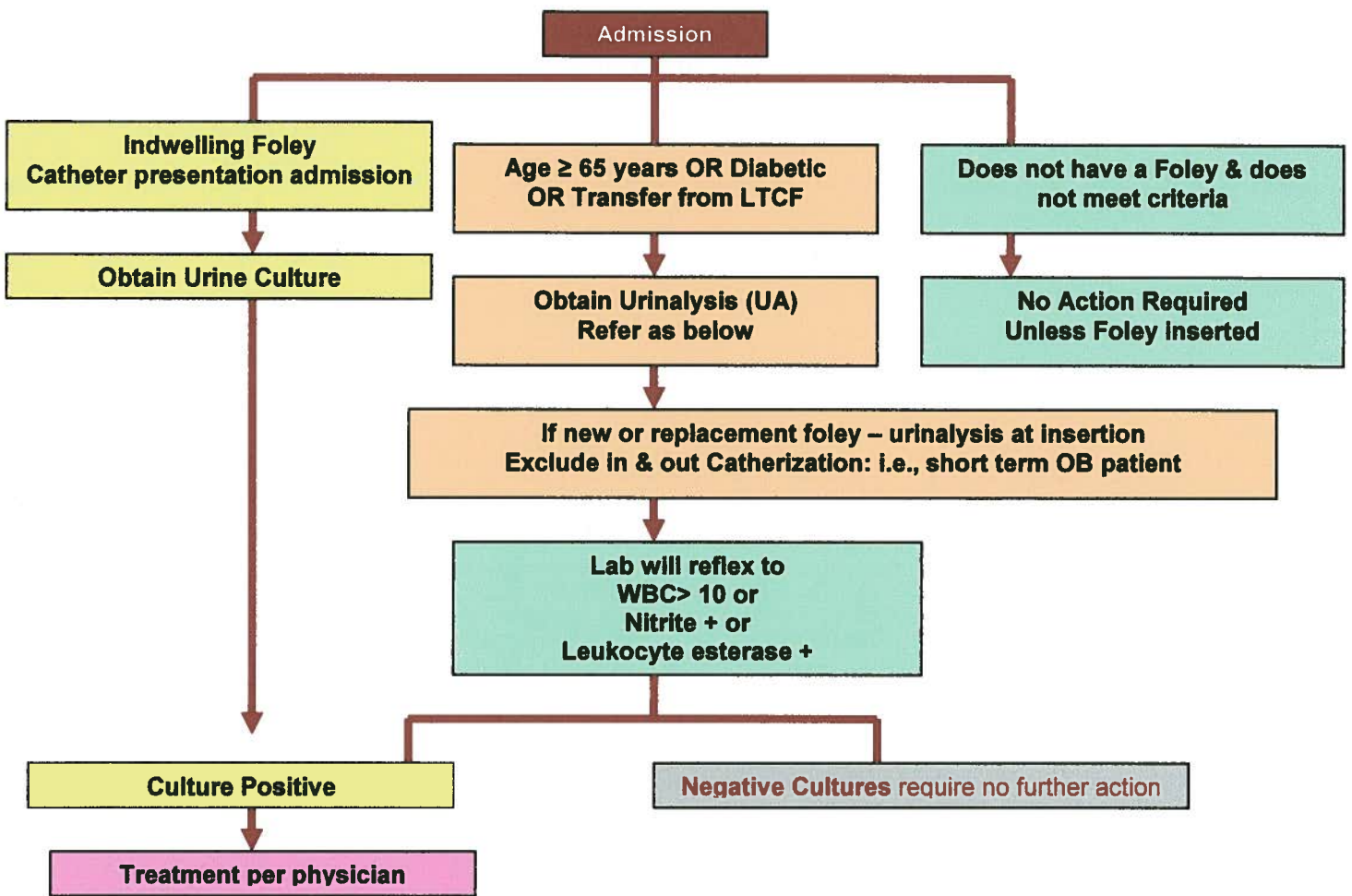
## UA/ Foley Protocol

1. Obtain UA when a new or replacement foley is inserted.
  - Urinalysis ( UA or UAO)
2. Send urine culture if foley present on admission to facility.
  - Urine culture (Urine)
3. Collect a UA on admission to facility if any one or more of the following criteria are present:
  - 65 years of age or older
  - Diabetic
  - Transferred from a long term care facility

Consider this complete if a pre-admit UA has been done.

  - Urinalysis ( UA or UAO)

### Catheter Associated UTI Algorithm



☒☒☒ Culture recommended for any patient with symptoms. ☒☒☒  
**Always collect cultures from the sampling hub.**

Physician signature:
Form # 600029    Approved 10/10/08

Patient Identification

Physician signature not required if UA/Foley Protocol order written.